

Luis Covarrubias Mural

Lee Drake
Mexico City, May 8th, 2015



1

3

4

5

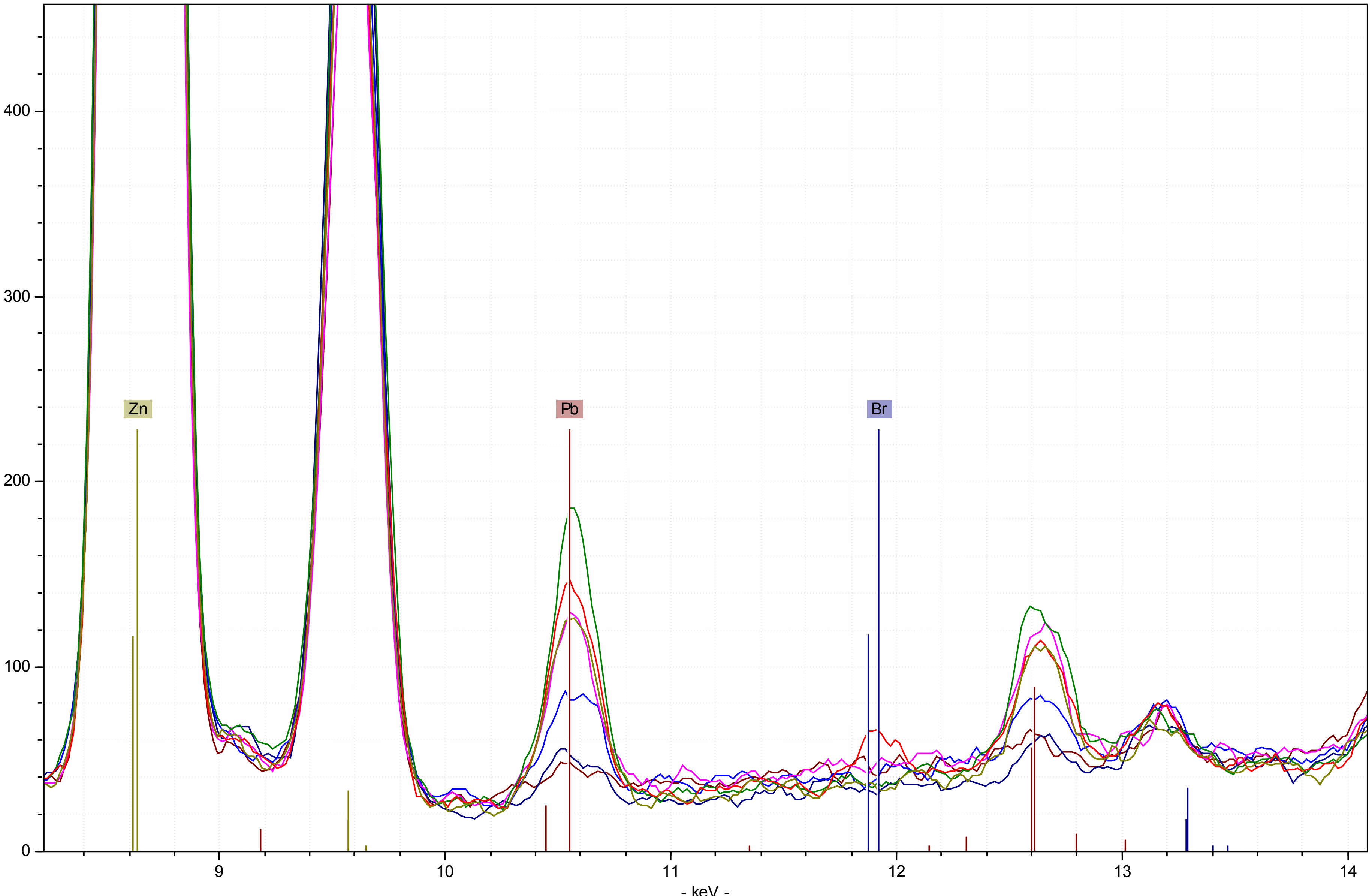
6

7

8



Pulses



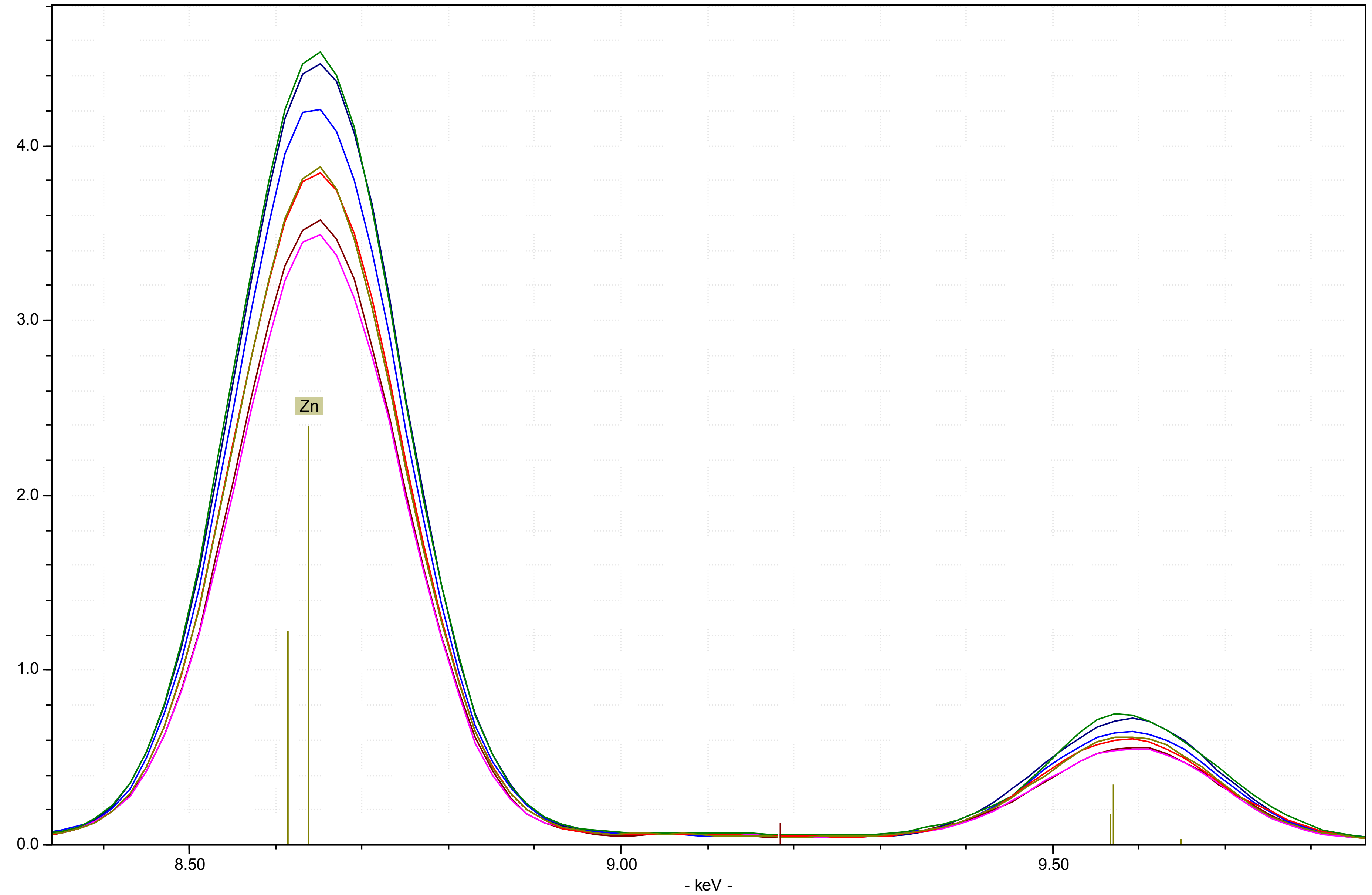
- Level 7
- Level 6
- Level 5
- Level 4
- Level 3
- Level 2
- Base White 1

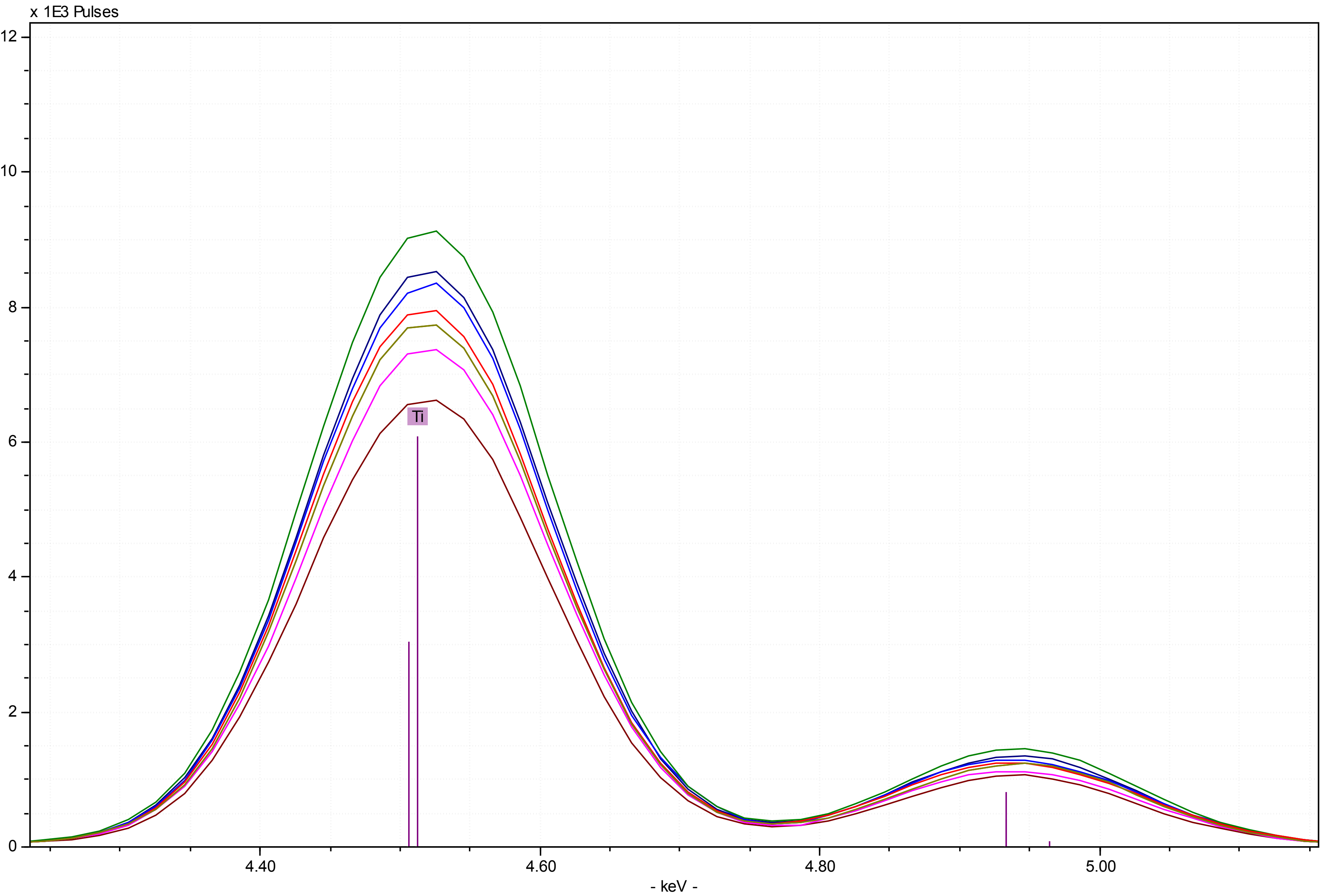
Lead appears to be present in larger quantities with more intense blue colors

x 1E3 Pulses

- Level 7
- Level 6
- Level 5
- Level 4
- Level 3
- Level 2
- Base White 1

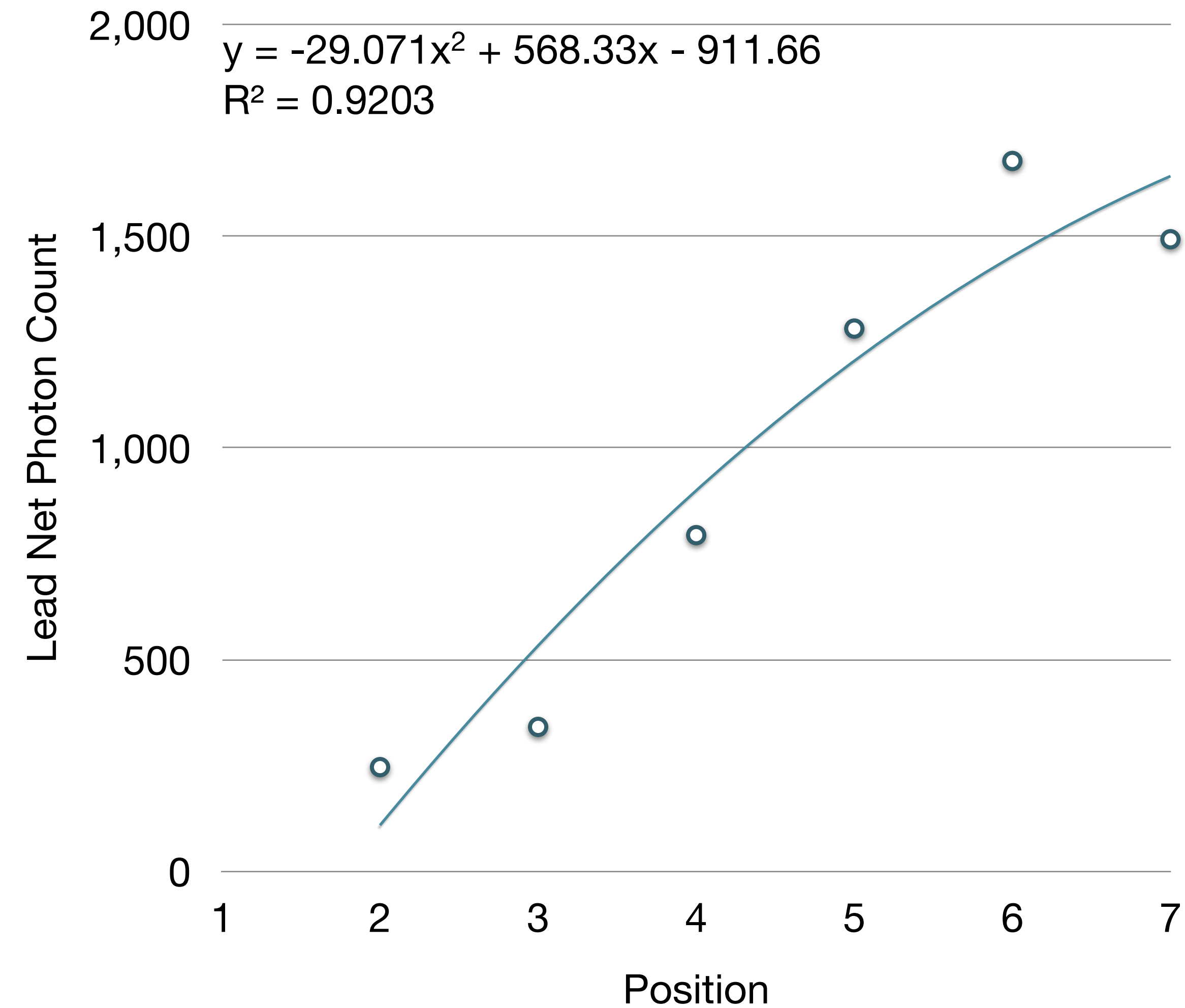
Titanium appears to have no overall pattern, but is distinct between the different colors



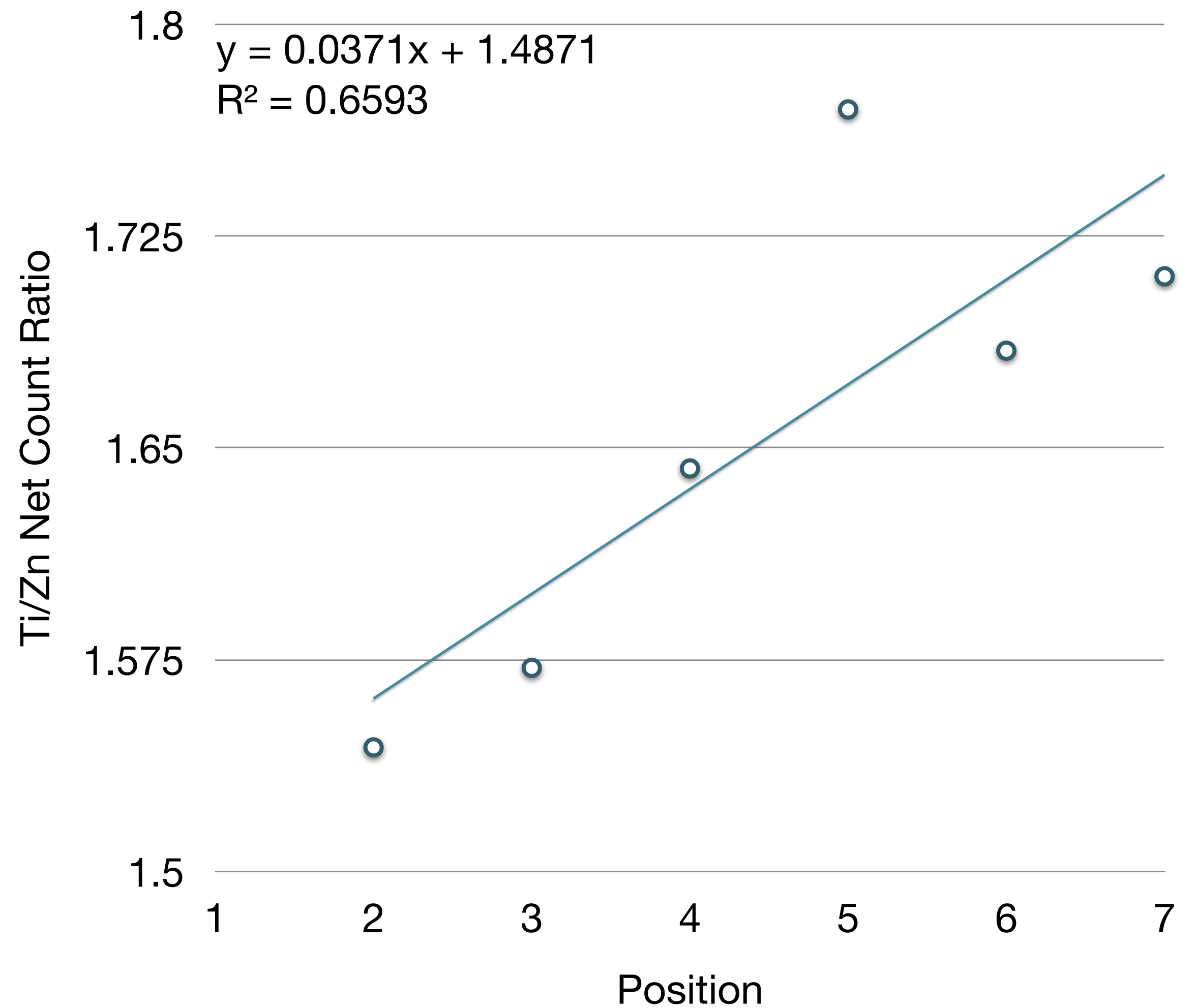


- Level 7
- Level 6
- Level 5
- Level 4
- Level 3
- Level 2
- Level 1
- Base White 1

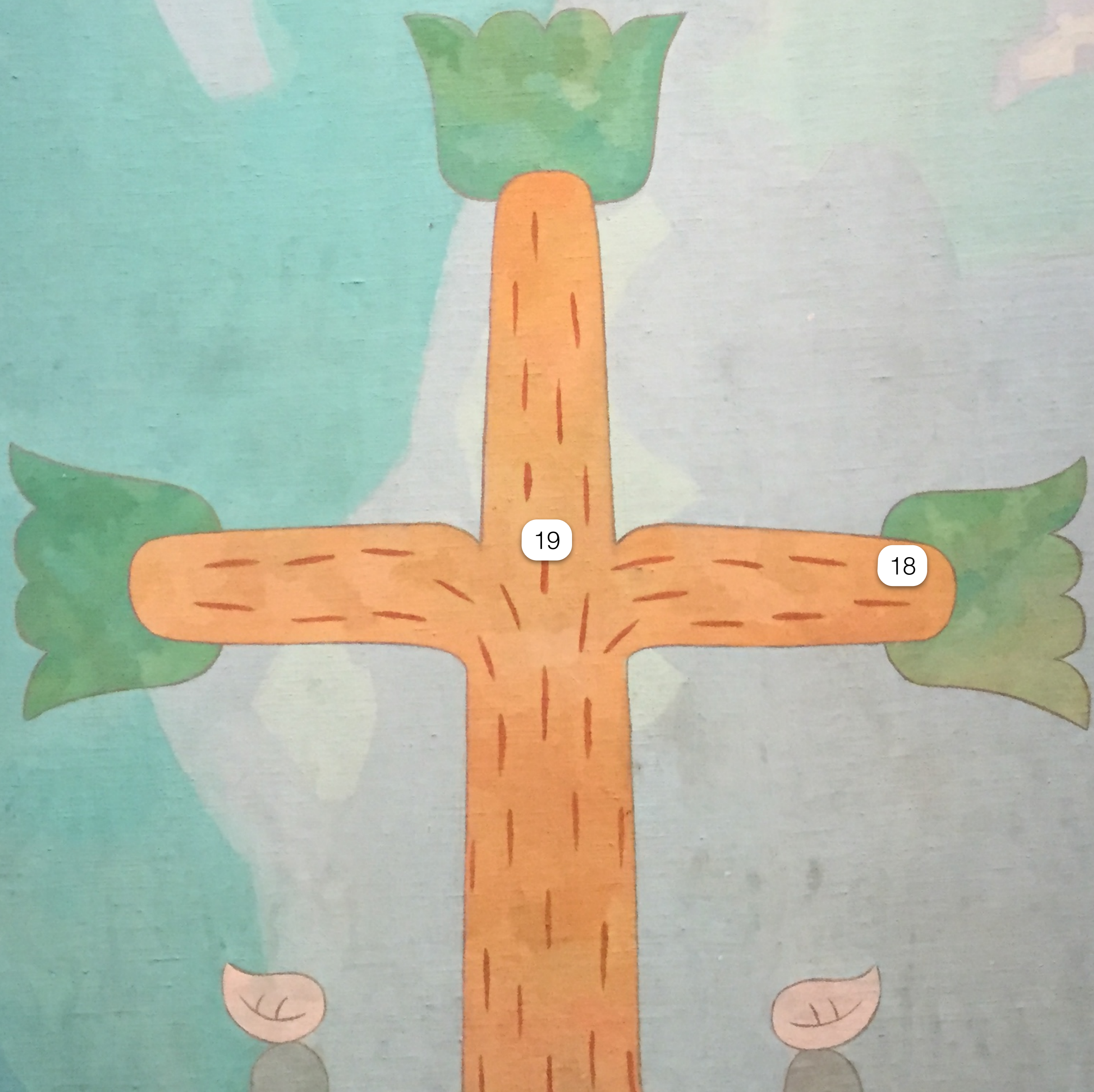
Zinc appears to have no overall pattern, but is distinct between the different colors



Increasing lead shows a strong correlation with blue intensity - here the position of the measurement (blue intensity) explains 92% of the variation in Lead.

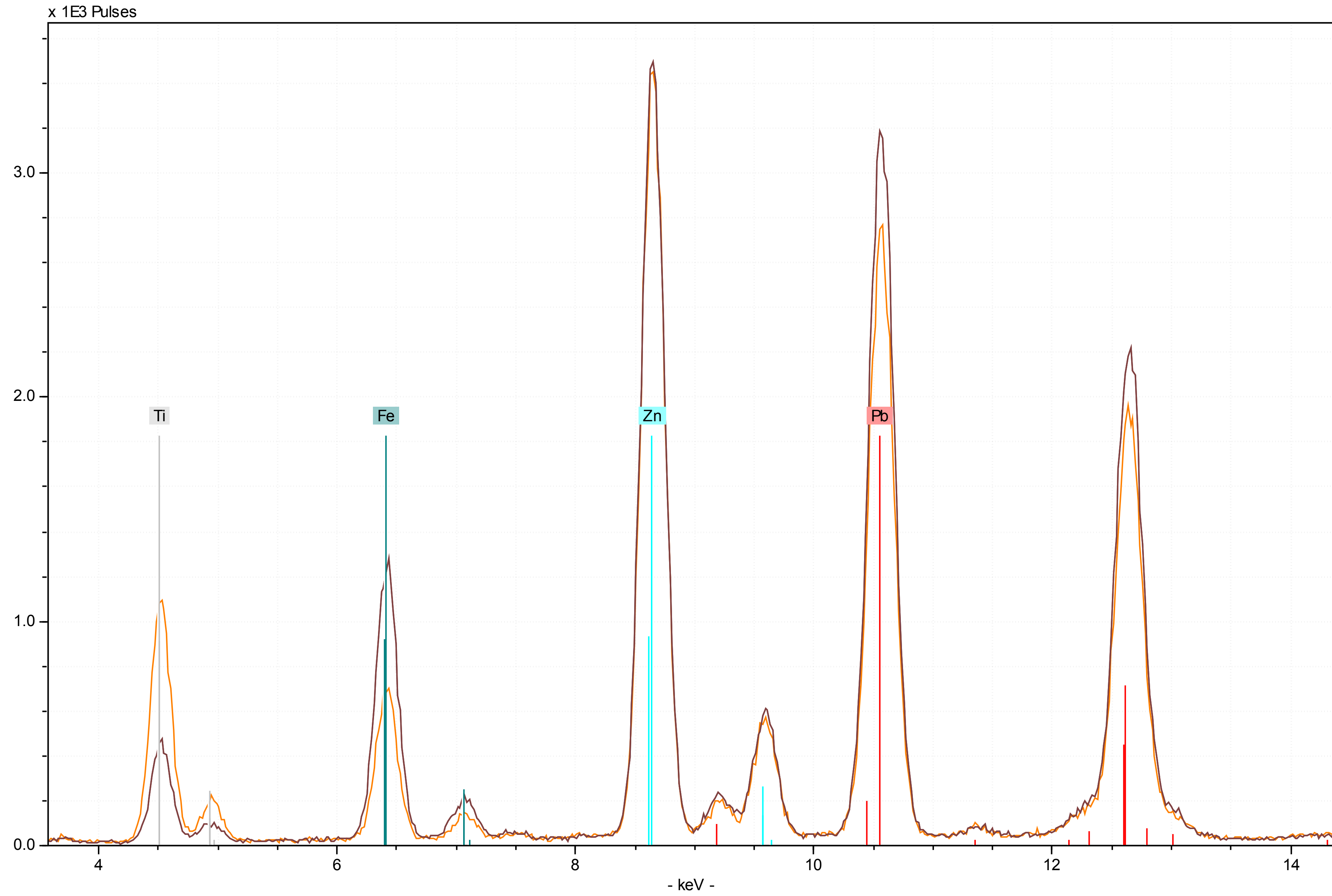


While neither Titanium or Zinc show a relationship, the ratio between the two does, and about 66% of its variation is explained by the position of the measurement (blue intensity).



19

18

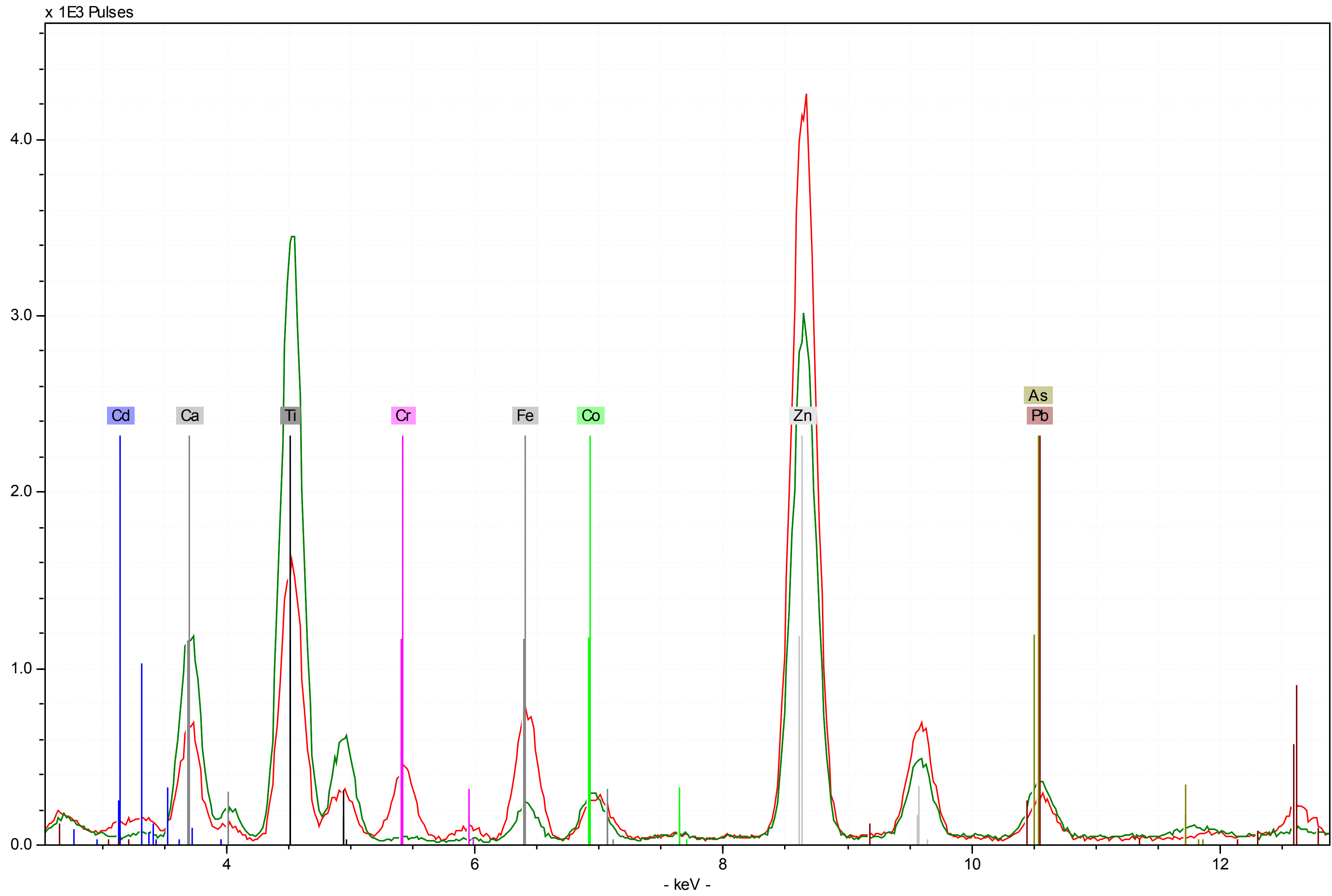


Yellow Cross 18

Brown Line 19

The yellow color of the cross is a yellow ochre with lead white mixed with titanium white on a zinc base. The brown color has more hematite (evidenced by more iron) with less titanium white mixed in.

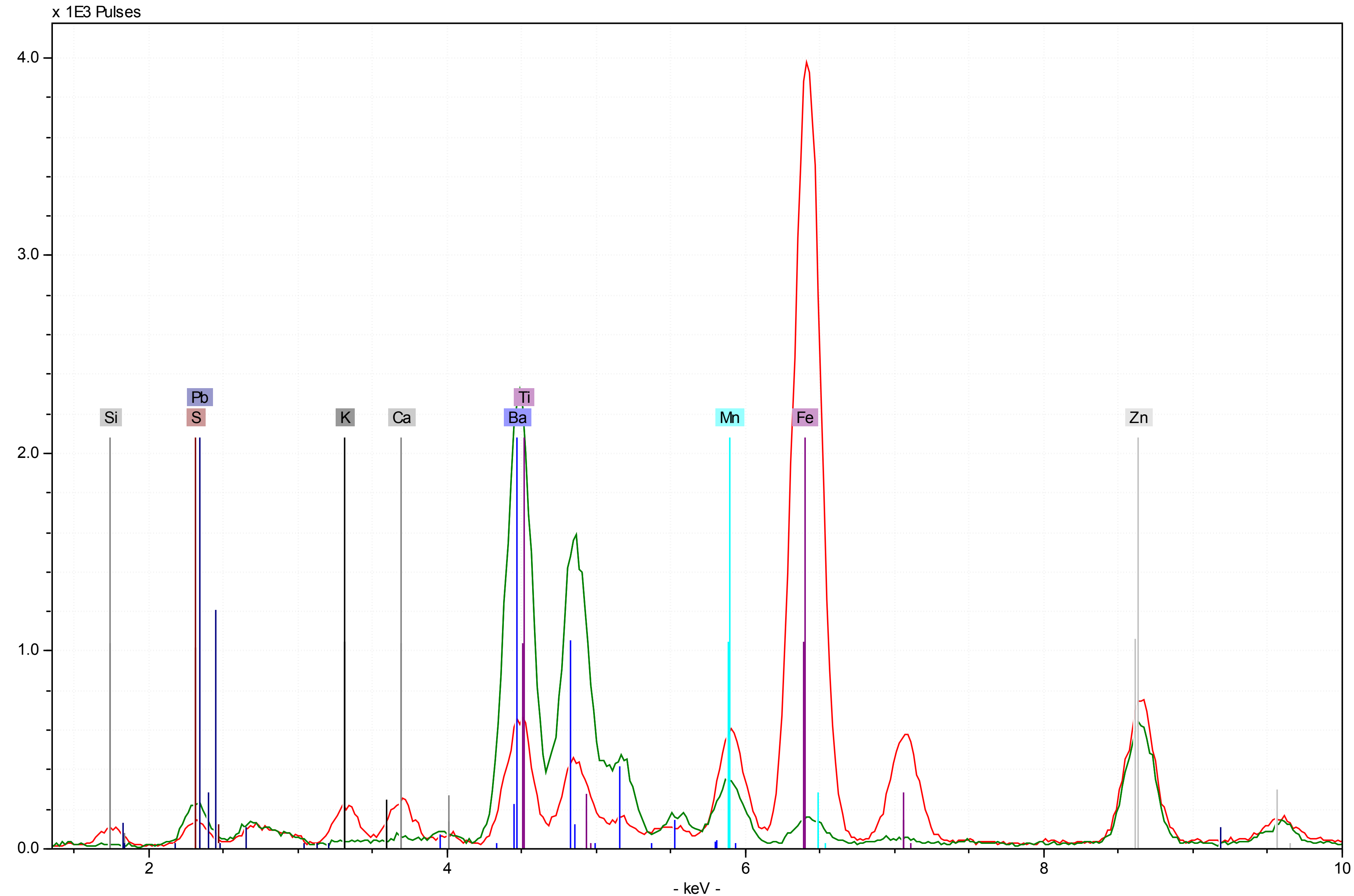




■ Olmec Grey 13
■ Wahaca Grey 14

The Olmec grey includes more iron. The Wahaca grey is quite different, having more calcium and titanium. The chrome and cadmium may indicate that the landscape was painted first, with artifacts added afterward.





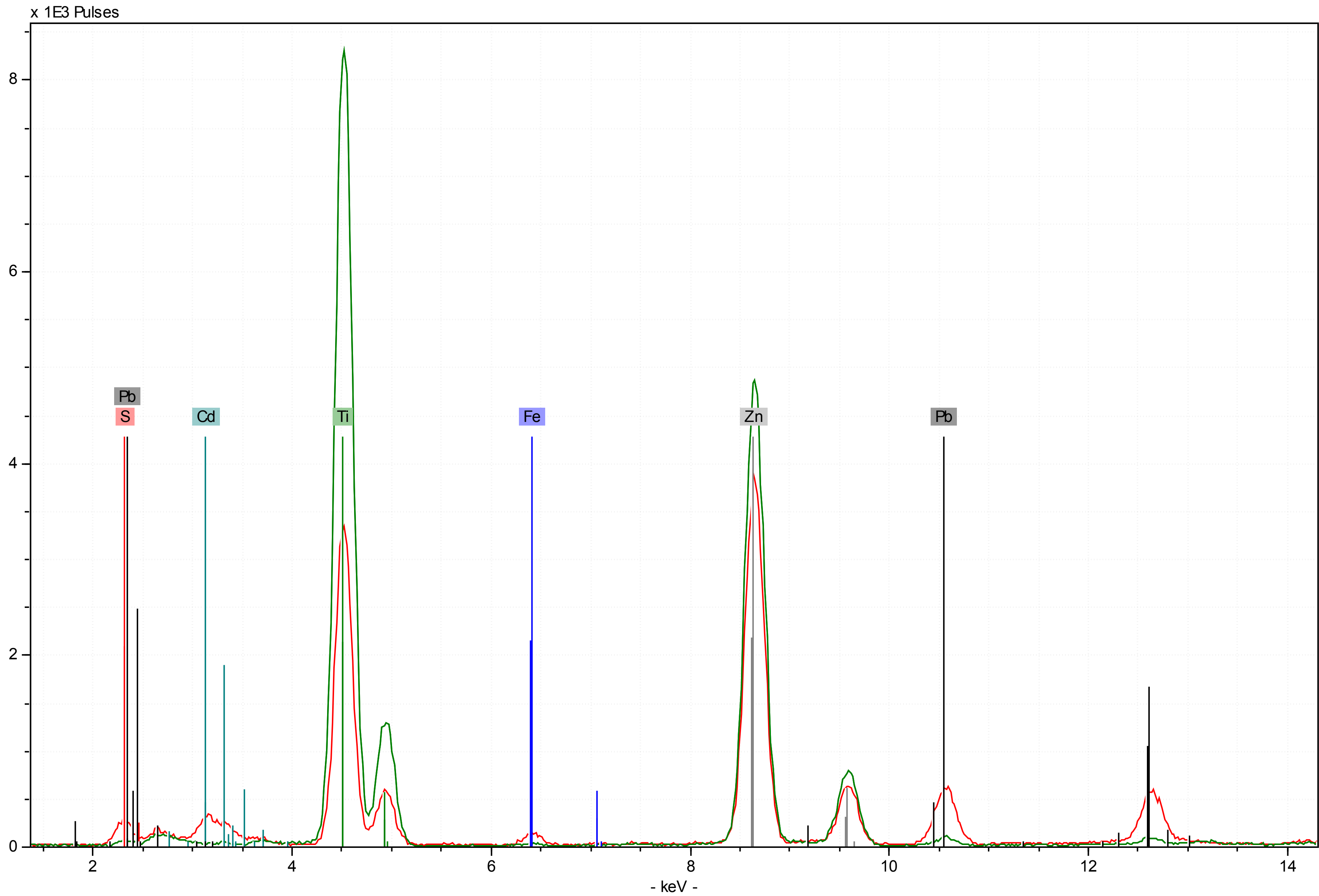
■ Eagle Blue 20
■ Eagle Black 21

The black eagle has lots of iron and manganese, in addition to potassium and calcium. The blue eagle has lots of Barium. That the black eagle also has barium may indicate that it was originally blue, with an subsequent repainting. This is indicated by the higher L-beta to L-alpha ratio (second peak is bigger relative to first).



12

11



Yellow Cloth 11

Cotton White 12

The yellow cloth includes cadmium and lead, indicating cadmium orange or yellow. The cotton white includes lots of titanium, indicating titanium white pigment (albeit with some sulfure mixed in).

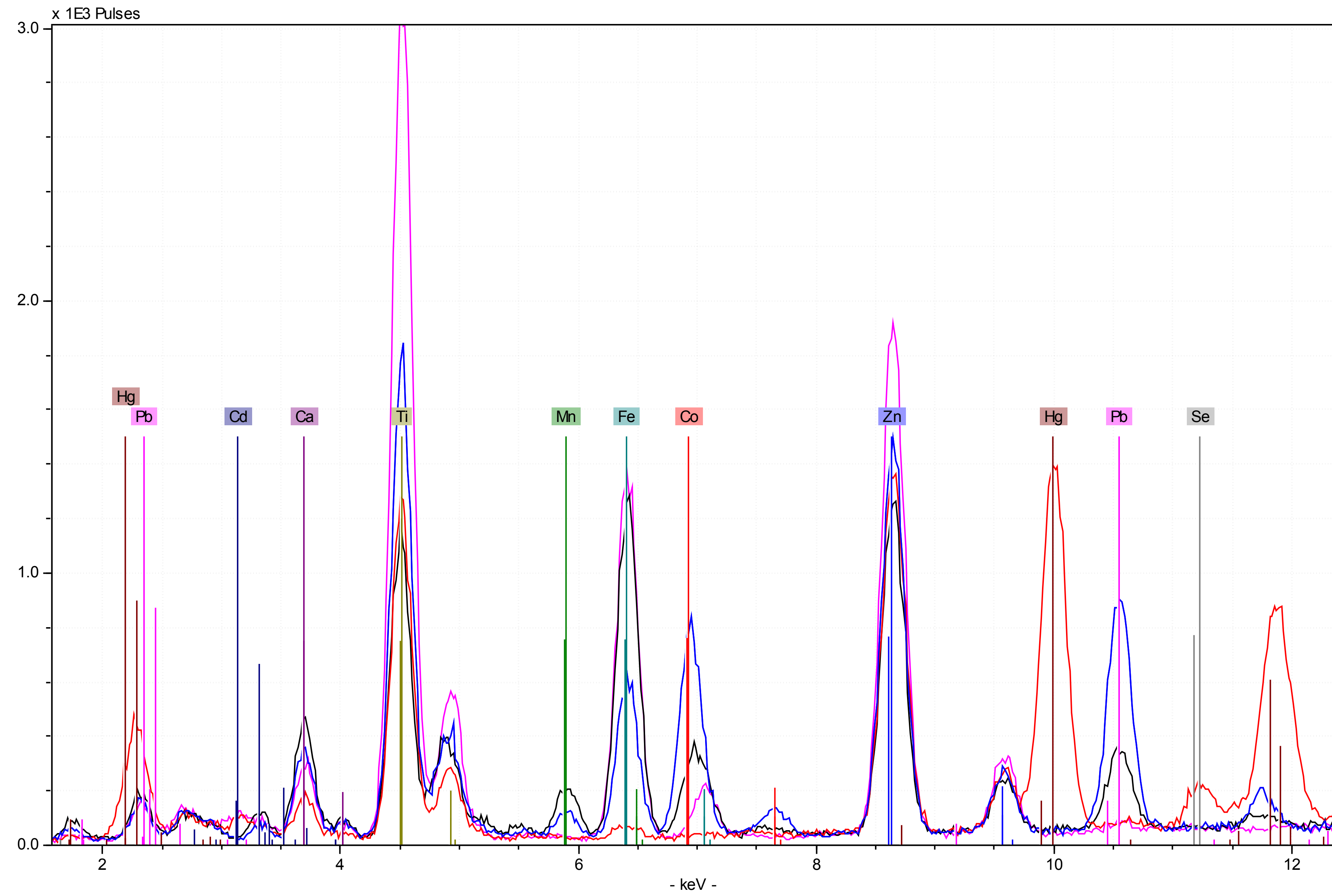


10

9

22

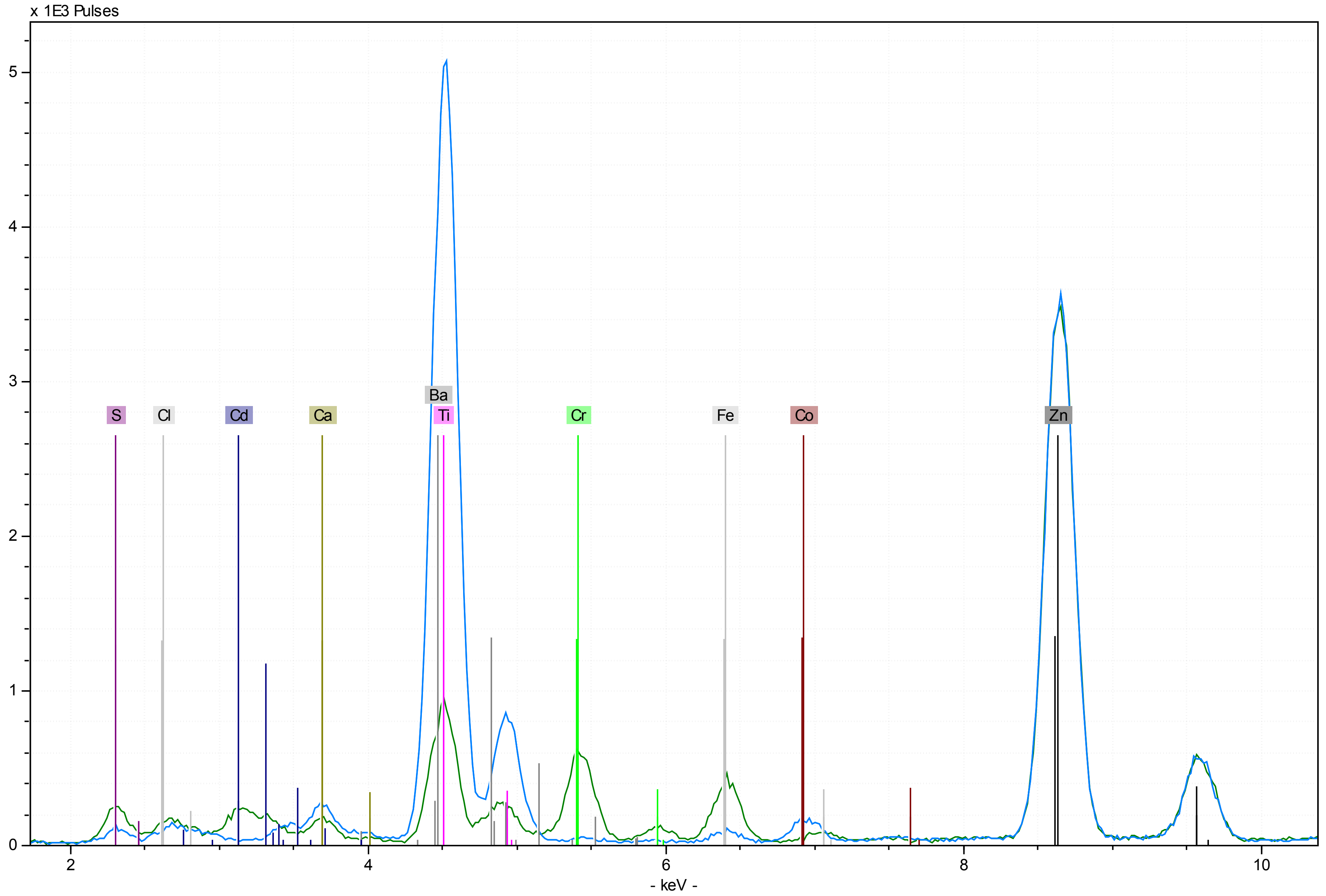
23



- God Red 9
- God Black 22
- God Flame Yellow 10
- God Blue 23

The red color of the god comes from cinnabar (evidenced by mercury). The blue color is from cobalt, though this element also contributes to the black color. The yellow flame is a yellow ochre diluted a bit with titanium dioxide.





Veracruz Green 2
 Blue Mountains 17

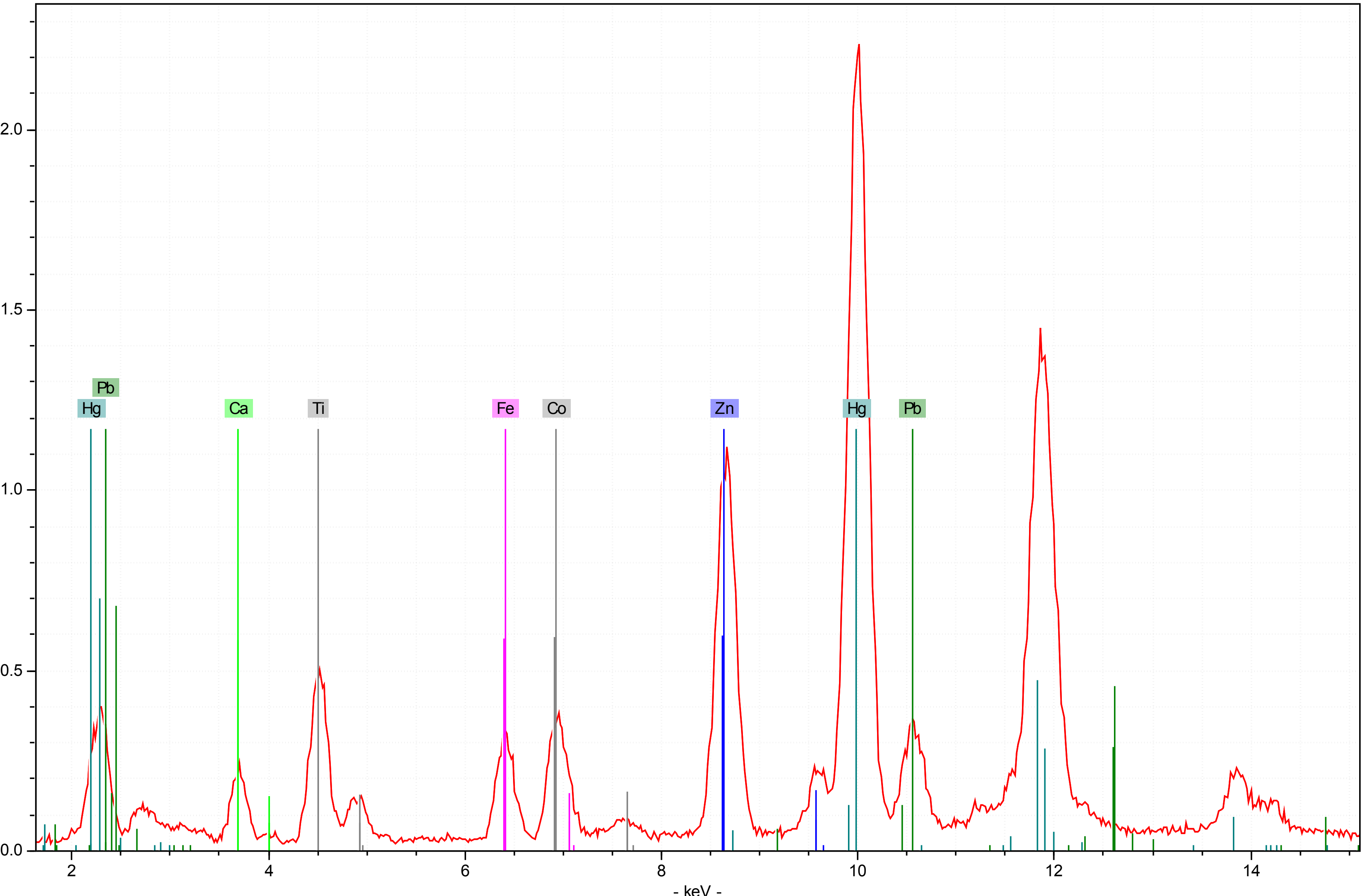
The Veracruz green landscape is a product of mix of cadmium and chrome greens. The blue mountains are created with cobalt mixed in with titanium dioxide.



16

x 1E3 Pulses

Occidente Red 16



The red pigment is clearly created using cinnabar (evidenced by mercury).

